

Table of Contents

Welcome to the PartyLite Product Guide. This guide offers you information on features and care instructions for current accessories, candles, flameless fragrance and personal care items.

Click on a topic you'd like information on. Scroll down the page to find the item you are looking for. This guide is updated with each new addition to our line, so check back often.

Accessories	Candles	Flameless Fragrance	Personal Care
Accessory Care	Burn Time Chart	Ancient Ruins Orb Set	Simply Lavender
Quality & Safety	Candle Care Tips	Aroma Simmers	Well Being
3-Wick Holders	Safety Tips	Diffusers	
Aroma Melts Warmer	3-Wicks	Scent 4U Fan & S-Pod	
Candle Lamps	5-Wick Square	Scentglow	
Hurricanes	Ball Candles		
Lanterns	Candle Refills		
Peglites	Floaters		
Pillar Holders	Jar Candles		
Sconces	Melts (Aroma & Scent Plus)		Natural Rituals
Shades	Pillars		Soy Candles
Snuffers	Scents of Illumination		Scented Oil
Taper Holders	Specialty Candles		Incense
Tealight Holder	Tapers		
Votive Holders	Tealights		
Water Fountain	Votives		

PartyLite Accessories

PartyLite's candles and accessories are designed to work together to bring your Customers the very best in home decorating options. And the best part: PartyLite is committed to producing the finest-quality accessories.

[Table of Contents](#)
[Accessories](#)
[Candles](#)
[Flameless Fragrance](#)
[Personal Care](#)

At Shows, you will want to share what sets our candle accessories apart.

Here are just some of the many ways:

- Our candle accessories are vigorously tested for safety in PartyLite's state-of-the-art Innovation Research and Development facility.
- PartyLite uses the finest materials to produce exclusive designs.
- PartyLite products meet or exceed internationally recognized candle safety standards.
- PartyLite is committed to quality and stands behind every product we sell. PartyLite backs its commitment to quality with a 100% Satisfaction Guarantee.

Accessory Care

Handblown Glass Care: To clean handblown glass, hand wash only with warm, soapy water and a soft damp cloth. Dry with a lint-free cloth. Do not place in dishwasher.

Universal Clear Glass Votive Cup Care: To clean, wash in warm soapy water or place in the dishwasher.

Pressed or Colored Glass Care: To clean glass, hand wash only with soft damp cloth and dry with a lint-free cloth. Do not place in dishwasher.

Mosaic Glass Care: To clean mosaic glass, wipe the surface with a soft damp cloth. Dry immediately. Do not submerge in water, which might result in water migrating between surfaces, causing discoloration.

Metal Care: To clean, remove surface dirt with a soft dry cloth. Never use abrasive materials that might harm the finish.

Resin Care: Dust with dry cloth.

Ceramic, Porcelain and Polyresin Care:

For glazed ceramics: Hand wash only in warm soapy water using a soft cloth. Dry with a lint-free towel. Do not place in the dishwasher. Never use abrasive materials that might scratch the surface.

For unglazed ceramics: Dust with dry cloth only.

PartyLite Quality & Safety

Our Product Marketing and Development and Innovation Research and Development teams' quality and safety standards meet or exceed the standards established by the National Candle Association for the industry. **Some of these standards include:**

Surface Temperatures: All accessories are evaluated for surface temperature using high-tech thermal imaging devices. For safety, do not move a holder with a lit candle inside.

Thermal Shock Test: All glass accessories must pass a test for their reaction to a sudden and extreme temperature change and for any hint of breakage. This ensures the glass can handle the high temperature conditions experienced when used with a burning candle.

Tip Stability: All PartyLite accessories also pass the "tip" test. If someone places a holder on a surface that is not completely level, PartyLite holders will stand securely. PartyLite standards for this test measure beyond the industry standard.

Flammability: New materials used in producing innovative designs must pass this test to ensure that under reasonably expected conditions, the item will not support a hazardous flame. PartyLite standards for this test also exceed industry standards.

Safe Candle Performance: Accessories affect the burn performance of a candle. All accessories are tested with PartyLite candles to ensure the best performance and safety.

3-Wick Holders



Our mightiest candle, the 3-wick, becomes a focal point in any living space when combined with a PartyLite 3-wick holder.

Features:

- A 3-wick holder can be designed as a bowl, a hurricane or a flat tray.
- In many cases, a 3-wick holder is food safe and can be used as decorative serveware.
- Instructions are provided in the product insert.

Aroma Melts™ Warmers



Aroma Melts Warmers hold Aroma Melts wax or AromaSimmers® liquid potpourri in a dish or hollow at the top of the warmer.

Features:

- The base of the warmer holds a tealight.
- Heat rising from the lit tealight in the base gently releases fragrance from the Aroma Melts or PartyLite AromaSimmers liquid potpourri in the top.
- Aroma Melts Warmers are rigorously tested to assure that the wax melts within a specified amount of time and that the accessory wax pool does not overheat.

Candle Lamps



A PartyLite candle lamp is a free-standing candleholder.

Features:

- A candle lamp is made up of a base to hold either a votive or tealight, and a shade made of glass or flame-retardant fabric stretched on a metal frame.
- PartyLite offers a variety of styles of on-trend candle lamps designed to coordinate with a multitude of home fashion choices.

Hurricanes



PartyLite hurricanes are both practical and dramatic.

Features:

- A hurricane protects a candle from blowing out or burning unevenly in areas where there could be unexpected drafts.
- Most hurricanes hold pillars, votives, tealights and jar candles, making them very versatile.
- Typically, PartyLite hurricanes are made of glass or pierced ceramic and are free standing or combined with a metal base to allow for flow of air throughout.
- Some might come with sand to stabilize the pillar candle.

Lanterns

Table of Contents
Accessories
Candles
Flameless Fragrance
Personal Care



In addition to the beautiful illumination, lanterns offer versatility for indoor and outdoor use.

Features:

- A PartyLite lantern protects the flame from drafts and breezes when used outdoors.
- Versatility is another key benefit of the lantern, as most can be hung on the wall or from the ceiling or displayed on a tabletop.
- Be sure to follow the candle suggestions with each accessory.
- Weather-resistant lanterns should be stored indoors during inclement weather.

Peglite



A PartyLite peglite is a “peg,” but with a candleholder attached.

Features:

- Typically, the peglite is fitted with a rubber grommet and designed to fit securely into any PartyLite taper holder or sconce with a taper well.
- Peglites are sold individually or as a component.
- A peglite is usually made of glass and holds a PartyLite votive or tealight.

Pillar Holders



Exclusively designed in a variety of materials and finishes, this wide array of holders complements round and square pillars.

Features:

- PartyLite pillar holders are as safe as they are beautiful.
- Each PartyLite pillar holder is subjected to a series of quality tests designed to assure safety and performance.
- All pillar holders (with the pillar candles on them) must pass the tip stability test.

Sconces



A sconce is a traditional wall-mounted lighting fixture that enhances almost any décor while adding dramatic light and shadow accents to a room. *Note:* Some sconces are also tabletop pieces.

Features:

- A basic PartyLite sconce consists of a wall plate, a mounting bracket, and single or multiple arms or branches to hold a taper, tealight or votive in a peglite or glass cup.

- In another version, a wall plate is part of the sconce itself, which might include a small shelf to display a pillar or ball candle.
- As with all PartyLite accessories, PartyLite sconces undergo rigorous testing to assure safety and performance.
- Do not hang sconces closer than 17” from the ceiling.

Shade

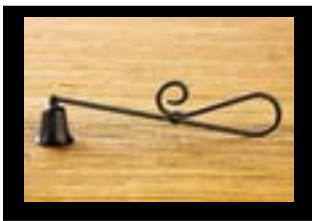


A PartyLite shade accessorizes a PartyLite Barrel or Mini Barrel Jar to transform the jar candle into a charming designer “lamp.”

Features:

- Shades are available for purchase individually.
- In all cases, it is essential to follow the candle display suggestions as individual shades only fit specific Bestburn™ Jars.

Snuffers



PartyLite recommends the use of a snuffer when extinguishing candle flames.

Features:

- A snuffer prevents liquefied wax from spraying and keeps the wick from being blown off center.
- Some with a bendable hinge that makes it easy to use in tall candle holders.

Taper Holders



PartyLite offers a variety of sizes and shapes in taper holders.

Features:

- PartyLite taper holders are sold individually or in pairs and hold PartyLite Handiapt tapers.
- To transform a simple taper holder into a dramatic candle lamp, pair your PartyLite taper holder with a PartyLite peglite.

Tealight Holders



PartyLite tealight holders are specially designed and tested to fit PartyLite’s universal tealights.

Features:

- All PartyLite tealight holders are crafted and tested to accommodate PartyLite tealights, which, like votives, liquefy when burned.
- Crafted from crystal and glass to ceramics and metals, tealight holders vary in

size, displaying one or more tealights.

- Never burn a votive in a tealight holder, as the candle well is not deep enough to hold the volume of liquefied wax from a votive.

[Table of Contents](#)
[Accessories](#)
[Candles](#)
[Flameless Fragrance](#)
[Personal Care](#)

Votive Holders



PartyLite votive holders are specially designed and tested to fit votives.

Features:

- All votive holders are rigorously tested to ensure more than 90% consumption.
- As with tealight holders, votive holders are crafted from a variety of materials. Some hold several votives to deliver multiple points of light.
- It is especially important when burning square votives to burn them in holders specifically designed to hold a square votive.
- Keep votive wicks centered when burning in glass. Flame contact with glass may lead to breakage.

Water Fountain



Feng Shui (pronounced fung-shway) is an ancient Chinese practice that creates harmony through arranging a space in ways that assist positive energy or Chi. Feng Shui literally means “wind-water,” which is why fountains have become so popular in home décor.

Features

- Resin frame has the look and feel of petrified wood. Tall, clear glass votive cup included.
- Easy assembly instructions included; electric pump with attached cord packaged separately for each country. 18¾" h, 11" w, 5" d.
- For indoor use only.

Care

- Fill the water well in between the MIN/MAX fill lines. Distilled water is recommended (holds approximately 8 cups). Water will evaporate so check frequently to be sure there is sufficient water. Change the water weekly.
- Periodically clean the glass panel and inside the resin water well with warm water and soft sponge. No detergent.

PartyLite Candles

- [Table of Contents](#)
- [Accessories](#)
- [Candles](#)
- [Flameless Fragrance](#)
- [Personal Care](#)

Quality is the cornerstone of the success of PartyLite worldwide – no other candles in the marketplace today even come close! Time and time again, once a Host or Guest experience PartyLite candles and other fragrance products, they become Customers for life.

Our Candles are Unmatched

At Shows, you will want to share why all candles are not created equally. Here are just some of the many reasons:

- PartyLite uses more than 100 different kinds of wicks, depending upon specific fragrances and forms.
- All PartyLite fragrances are consumer tested in our state-of-the-art sensory evaluation labs, assuring a “winning” fragrance each time. Some of our fragrances contain up to 100 ingredients to create the perfect combination.
- PartyLite backs its commitment to quality with a 100% satisfaction guarantee.
- We offer a wide variety of candle fragrances in a variety of colors and forms.
- PartyLite products meet or exceed internationally recognized candle safety standards.
- Our candles are vigorously tested for safety in PartyLite’s state-of-the-art Research and Development facility.
- We use an exclusive formulation of high-quality materials, from highly refined wax to lead-free wicks, for a clean burn and maximum performance.
- Our candle fragrances are developed in collaboration with some of the world’s top fragrance houses.

Burn Time At-A-Glance Chart

3” Ball	Floater	Refills	Taper 10”	Tealight small	Tealight large	Votive
20-30 hrs	3.5 – 4.5 hrs	35-40 hrs	7-8 hrs	3,8-6 hrs	9-14 hrs	8-11 hrs
Jars						
Hurricane	Just Dessert	Single Serve	Barrel	Mini Barrel	Limited Classice	
70-80 hrs	30-40 hrs	20-30 hrs	55-65 hrs	25-35 hrs	30 - 40	
Pillars						
	3x3	3x5	3x7	6x5		
Scented Round Paraffin Pilir	30-35 hrs	65-70 hrs	90-95 hrs			
Unscented Paraffin Pillar			85-90 hrs			
Rustic Round Pillar			85-90 hrs			
Mottled Round Pillar			75-85 hrs			
3-Wick				100+ hrs		
5-Wick				75-90 hrs		

Candle Care Tips

Beautifying: Keep (smooth finish) candles beautiful and clean by rubbing gently with a fine mesh stocking to heighten the gloss and remove any scratches.

Centering Wicks: It not only helps candles burn evenly, but also protects the sides of the holder or container that could be damaged by close contact with the flame. Use an unbent paper clip to position the wick when necessary.

Grouping: When grouping lit candles, keep candles and holders at least 1 ½” inches apart from side to side to prevent excessive heat buildup, which can cause the candles to spill over.

Placement of Candles: To avoid spillover from the wax pool, always place candles on a flat, level surface, away from drafts. Storage: Candles are sensitive to both temperature and light; avoid color fading, melting or cracking by storing candles in a cool, dry, dark place. Avoid placing candles in direct sunlight to prevent fading and warping.

Releasing Fragrance: Over time, candles may appear to lose their fragrance. Interaction with air creates a surface barrier that traps fragrance inside. To release fragrance, simply rub the candle with a mesh cloth and the candle will smell like new.

Removing Wax from Glass Holders: To remove wax from glass, run under hot water until the wax is melted, then wash with warm, soapy water. Excessive wax may also be easily removed from holders by cooling in the freezer until the hardened wax pops out. Bring holders back to room temperature before reusing. Never use a sharp instrument to remove wax from holder.

Removing Wax (Carpet): To remove wax from carpeting, please contact your local carpet supplier for instructions. Many new carpets contain synthetic fibers that can melt if exposed to extreme temperature. PartyLite does not recommend using heat to remove wax from carpeting.

Safety Tips

Never leave a burning candle unattended.

Extinguish the flame before falling asleep or leaving a room. Keep burning candles within sight.

Never move a lit candle or touch the liquid wax at any time. Extinguish and let the wax harden before moving to a new location.

Keep burning candles out of the reach of children and pets.

Debris: Keep liquid wax free of wick and match debris, as these are flammable. Always remove the metal sustainer from a completely burned votive.

Extinguish. Do not allow a candle to burn down completely. Extinguish the candle when it gets to within ½-inch of the holder bottom or ¼-inch of a jar bottom. This minimizes the risk of the candle or holder overheating.

Placement: Do not place holders in drafty areas or on top of televisions or other electronic equipment or furniture that could be damaged by heat. Always burn candles in appropriate heat-resistant holders on heat-safe surfaces. When grouped together, candles should be separated 2 inches apart from side to side. Keep natural materials and flammable rings away from candles and always keep candles a safe distance from combustible materials such as curtains.

Removing carbon: If black deposits build up and form a carbon ball on the candle wick, extinguish the candle, then trim the wick for clean and even burning. Carbon balls that fall into the wax should be removed. This is because carbon ball debris can cause the candle to burn unevenly and can pose a safety issue.

Wick trimming: For most candles, you achieve the best burn when you trim the wick to ¼-inch before each lighting (except tealights and 3-wicks).

Snuffer: Always use a snuffer to extinguish candles. This prevents wax from spraying and wicks from drifting off center. Do not extinguish candles with water, as it may cause wax to splatter or the container to break.

[Table of Contents](#)
[Accessories](#)
[Candles](#)
[Flameless Fragrance](#)
[Personal Care](#)

3-Wicks

[Table of Contents](#)
[Accessories](#)
[Candles](#)
[Flameless Fragrance](#)
[Personal Care](#)



Burn Times

- 3-Wick 6" x 5": 100+ hours
- 4" x 6" 3-Wick Pillar: 80 – 100 hours

Our powerhouse candle, the round 3-wick, is a terrific value. Enjoy the multiple points of light.

Features

- When burned according to care instructions, 3-wicks consume down to a pancake-sized disc.
- Consistent levels of color and fragrance throughout the 3-wick.

Care

- To promote even burning, position each wick toward center of the candle.
- Do not trim wicks.
- When lighting a 3-wick, allow enough burning time for the wax to completely liquefy to the edges of the candle (approx. six hours). This helps prevent tunneling.
- Once the 3-wick has liquefied to its outer edge, extinguish, allow wax to solidify, then relight. This helps prevent possible spillover.
- Throughout the burn, while the 3-wick is pliable, periodically shape or “hug” the 3-wick by using your thumbs to gently press the soft edges inward around the rim. This keeps the surface as even as possible.
- Extinguish and discard the 3-wick when it is within 1 inch of the holder.

5-Wick Square



Burn Time

6" x 5": 75-90 hours

Features

- Consistent levels of color and fragrance throughout the 5-wick.

Care

- Always burn on a holder designed for this candle.
- Keep liquid wax pool free of wick trimmings, carbon balls, and match debris because these are flammable and can interfere with the proper burning of the candle.
- Burn the candle for at least five hours each time it is lit, or until the liquid wax pool reaches the edge of the candle. (Consecutive short burns will result in the candle burning poorly.)
- Do not burn the candle lower than 1 inch from the bottom as doing so can catch the bottom label on fire.
- After the candle is extinguished and the wax is still soft, gently “hug” the sides of the candle inward. This will help the candle consume the wax more evenly on the next burn.

Ball Candles



Burn Time
20-30 hours

Ball candles add interest to candle gardens when placed with either square or round pillars.

Features

- Ball candles are made of a solid core of lighter-colored, fragranced, pressed wax. The core is then overdipped with a colored wax that melts at a higher temperature than the interior wax which helps prevent spill overs.
- Ball candles retain their shape, leaving only a thin shell when the candle is finished burning.

Candle Refills



Burn Time
35-40 hours

Bestburn™ Candle Refills

Our exclusive candle refills and holders give the consumer multiple uses and multiple options. Simply pair your favorite Bestburn Candle Refill and holder.

- Place your Bestburn Candle Refill in the reusable holder of your choice (holders sold separately). When the candle burns down, simply replace it with a new candle refill.
- Your candle is designed to liquefy and should only be used in PartyLite's specially designed refillable holders. Never burn a candle refill in an open tray or on a tabletop surface.

Floaters



Burn Time
3.5-4.5 hours

Float PartyLite floaters in decorative bowls of water or a glass hurricane in a candle stand for relaxing, multiple points of light.

Features

- Solid color and fragrance throughout.

Care

- Place floaters in water gently to avoid water splashing on the top.
- May lean during burning, but will continue to burn.

Jars

Bestburn® Jar Candles



Burn Times

- Barrel Bestburn Jar: 55-65 hours
- Mini Barrel Jar: 25-35 hours
- Slim Hurricane Jar: 70-80 hours

The exclusive Bestburn formula by PartyLite is available in Barrels, Mini Barrels, Slim Hurricane Jars, Present Jars and Just Desserts and Single Servings as well as highly fragranced Giftably Boxed Candles (Pumpkin, Mini Pumpkin and Holiday Jars)

Features

- Bestburn Jar Candles burn cleanly and evenly with a great fragrance and are perfect for every room in the house.

Care

- To avoid both damage to the glass and visible soot, it is important to extinguish the flame when the candle has burned to within ¼-inch of the bottom of the jar. Do not burn to the bottom.
- Trim the wick to ¼-inch before each lighting.

- Never burn a jar candle on or near any electrical devices or flammable materials.
- To promote even burning, burn the candle long enough for the wax to liquefy to the edges of the jar.
- After the candle has been extinguished and the wax pool has solidified, any residual soot can be removed from the inside of the jar by using a soft cloth dampened with alcohol or plain water.
- Center the wick after a wax pool starts to solidify.

Just Desserts™ & Single Servings™



Burn Times

- Just Desserts™: 30-40 hours
- Just Desserts™ Single Servings™: 20 – 30 hours

A simply scrumptious blend of two quality fragrances layered on top of each other.

Features

- Available in five delicious combinations. Single Servings are sold as a set of two.

Care

- To avoid both damage to the glass and visible soot, it is important to extinguish the flame when the candle has burned to within a ¼-inch of the bottom of jar.
- Trim the wick to ¼-inch before each lighting.

- To promote even burning, burn the candle long enough for the wax to liquefy to the edges of the jar.
- After the candle has been extinguished and the wax pool has solidified, any residual soot can be removed from the inside of the jar by using a soft cloth dampened with alcohol or plain water.

Melts

Aroma Melts™ “Snap-able”



This innovative product allows you to break the Aroma Melt in two so you can combine any two different fragrances to create your own custom fragrance.

Features

- Aroma Melts are wickless.
- Completely liquefies within 20-30 minutes to add beautiful fragrance to the

home.

- Does not consume, but the fragrance will dissipate.

Care

- Place a full Aroma Melts (or two different halves) in the bowl of the Aroma Melts Warmer and light a tealight in the bottom. Do not melt just one-half of an Aroma Melts.
- To remove the used Aroma Melts, let the wax cool and solidify completely. Then press on the edges of the wax with your thumbs. When cooled completely, the wax should slip out in one piece.
- Do not use anything sharp or abrasive to remove the Aroma Melts wax or it will scratch the holder.
- Recommended for use only with PartyLite Aroma Melts Warmers.

Scent Plus® Melts



Our strongest, longest lasting melts yet. Each melt delivers a powerful fragrance that lasts up to 80 hours.

Features

- Begin with two melts for the quickest fragrance throw in ScentGlow warmers.

- Place up to four Melts in a Scentglow Warmer depending on how strong you want the fragrance
- In Aroma Melts Warmer use four melts.
- Don't use more than four melts.

Care

- To remove used wax, let the Melt(s) cool and solidify completely, then place dish in freezer for about 30 minutes. Press on the edges of the wax with your thumbs.
- Allow dish to warm to room temperature before re-heating.

Pillars

Round and Square Pillars



Burn Times:

See Pillar Burn Time chart below

Features

- Round pillars are available in scented and unscented. Square pillars are scented.
- Designed to burn evenly, pillars deliver a long-lasting, consistent burn throughout the life of each pillar.

Care for Round and Rustic Pillars

- After burning round pillars for a few hours, extinguish. Then gently press the soft wax sides inward around the edges (“hug”) to promote even and full consumption, and relight.
- Trim the wick to ¼-inch each time before relighting.
- Extinguish and discard pillars when within one inch of the holder.

Care for Square and Mottled-finished Pillars

- Unlike round pillars, it is not necessary to “hug” square or mottled-finished pillars.
- Trim the wick to ¼-inch each time before relighting.
- When arranging two or more candles together, maintain at least 1 ½ to two inches of space between the sides of the candles. Do not let the candles touch each other.

TIPS FOR ROUND AND SQUARE PILLARS, ALL FINISHES:

To promote even burning, burn pillars at least long enough for the wax to liquefy to the edges, or for approximately one hour for each inch of the pillar’s diameter. For example: Burn a pillar that is 3 inches in diameter for approximately three hours. When a pillar burns for many hours, a deep pool of wax can form as the wick gets longer and curls. This may cause the wax to spill over the sides or the wick to drown in the wax. To prevent this, keep the wick centered and remember to trim to ¼-inch before the candle is lit each time.

If wax is not melting evenly around the pillar edge, try rotating the pillar, or move the candle to a different location.

When arranging two or more candles together, maintain at least 1 ½ to two inches of space between the sides of the candles. Do not let candles touch each other.

Pillar Burn Times:

Paraffin Round Pillar

C33 3" x 3": 30-35 hours
 C35 3" x 5": 65-70 hours
 C37 3" x 7": 90-95 hours
 U37 3" x 7" 85-90 hours

Rustic Round Pillar

U07 3" x 7": 90-110 hours

Mottled Round Pillar

M37 3" x 7": 75-85 hours

Scents of Illumination

Scents of Illumination™



Translucent solid fragrance infuses scent while providing illuminations with a tealight.

Features:

- Fragrance lasts a minimum of three months.
- Heat from tealight intensifies fragrance throw from solid fragrance.

To Use:

- Use with tealight only. Do not use with votives.

Specialty Candles



Set of eight boxes of unfragranced candles

Celebration Candles

Perfect for every occasion.

Features

- Two boxes each of blue, yellow, pink and white.
- Twenty-four candles in each box.

Tapers

Handipts®



Burn Time

- 6" Handipt: 3-4 hrs
- 10" Handipt: 7-8 hrs

PartyLite taper candles come in two sizes. Unscented tapers are perfect for use when fragrance is not desired.

Features

- Tapers are drip-resistant because they have an exterior layer of wax that is slower to melt than the interior wax.
- A special base dip on Handipty® Tapers enables the candles to fit in any PartyLite taper holder.
- Handipty are sold in boxes of six.

Care

- Trim wick to ¼-inch before lighting.
- Be sure tapers are completely straight in their holders before lighting.
- When grouping tapers, be sure to keep them at least two apart to prevent excessive heat buildup.
- Extinguish tapers when within 1 inch of the holder.
- Store all tapers flat to prevent bending or warping.

- Remove any ornaments and decorative additions from tapers before you light them.
- To enjoy the longest amount of burning time from tapers and to minimize the possibility of dripping, keep them away from drafty windows, fans, air conditioners and heat ducts.

Tealights

Universal Tealights®



Burn Time
3.8-6 hours

Features

- Patented cup causes melted wax to pool at the center for better-than-ever wax consumption.
- Color and fragrance throughout.
- Sold in boxes of 12.

Care

- Do not trim tealight wicks.

Large Tealights



Burn Time
9-14 hours

Now the candles will last as long as the party. Our new large tealight burns longer and brighter than regular tealights. Perfect for fuss-free entertaining, indoors or out.

Features

- Available in eight popular fragrances as well as unscented white.
- Set of four
- 1"h, 2 1/4"w

Votives

Round Votives



Burn Time
8-11 hours

PartyLite votives fully liquefy as they burn, creating a beautiful shimmering look.

Features

- Fully consumes and liquefies so no wax is wasted.
- Available scented and unscented.
- Consistent levels of color and fragrance throughout.
- Packed in boxes of six. Sold by the dozen with the option of choosing two different fragrances.

Care

- Because the round votives liquefy, always burn round votives in a holder designed to contain the wax.
- Liquefied wax is hot. Do not touch at any time.

- Always remove any residual wax and metal clip from the holder before adding a new votive.
- Do not use anything sharp or abrasive to remove wax from a holder as it may scratch the interior of the cup.

TIPS FOR ROUND VOTIVES:

Fragrance Samplers are a great way to introduce new fragrances at a Show.

If scent appears to weaken over time, rub the votive with a mesh cloth to release the fragrance.

A couple of votives wrapped in colorful netting make a quick gift for a friend or a nice “thank you” for a Host.

To remove wax residue from a votive holder, place the holder in the refrigerator for about an hour. Remove from refrigerator and pop wax loose with gentle pressure with your thumb or finger. Be sure to remove metal votive clip from votive holder. Allow holder to warm to room temperature before burning a new votive.

Flameless Fragrance

Fill any space with fragrance without flame. Perfect for any space where burning a candle is not practical. Our exclusive scents enhance your rooms with clean, invigorating fragrances.

[Table of Contents](#)
[Accessories](#)
[Candles](#)
[Flameless Fragrance](#)
[Personal Care](#)

Ancient Ruins Decorative Orb Set



Features

- The small and large orbs are strictly decorative. The medium orb delivers fragrance and comes with a small tray. The tray doubles as a tealight holder.
- The terra cotta ball comes fragranced. Remove the stopper on the medium orb, place the fragranced ball inside the orb and replace the stopper. Display the fragranced orb in the tray.

- Scented Oils can be purchase as refills.

Care

- To refresh the fragrance, simply remove the stopper and add a few drops of Tropical Waterfall refresher oil (included) onto the terra cotta ball and replace the stopper.
- The orbs are terra cotta and can be cleaned with a soft dry cloth.
- Large: 4" dia; medium with tray 3¼" dia; small 3" dia.
- .17 fl. oz. Tropical Waterfall refresher oil.
- Refresher bottle of fragrance oil may damage wood surfaces, countertops and other finished surfaces. If spilled, wipe up immediately.

AromaSimmers®



Formulated by the world's finest fragrance houses, PartyLite's exclusive AromaSimmers liquid potpourri will fragrance a home within minutes. It's quick and easy.

Features

- Splashless formula is a quick way to add fragrance to any room in minutes.

Care

- Liquid is hot and may cause burns if touched. Do not touch liquid potpourri until it has cooled.
- Keep Aroma Melts™ Warmer within sight when using your AromaSimmers liquid potpourri.
- AromaSimmers liquid must be placed in a clean holder with no wax residue.
- Never move your Aroma Melts Warmer when tealight is lit.
- Never mix AromaSimmers liquid potpourri with other fragranced products such as Aroma Melts.
- Fill your PartyLite Aroma Melts Warmer three-quarters full with your favorite AromaSimmers liquid potpourri, then light a tealight. Adding the AromaSimmers liquid potpourri to a hot warmer could be dangerous.
- Do not dilute AromaSimmers liquid potpourri with water.

- Your AromaSimmers liquid potpourri is consumed when in use. Do not burn dry.
- Any used portion of your AromaSimmers liquid potpourri (more than quarter full) can be reheated.
- Do not pour any used portion of liquid back into the original PartyLite AromaSimmers liquid potpourri bottle.
- Wipe your Aroma Melts Warmer after use with a soft damp cloth. Dry immediately. Do not place in dishwasher.
- Recommended for use with PartyLite Aroma Melts Warmers.
- When the liquid is less than quarter full, extinguish the tealight candle and allow to cool for one hour. Clean out any remaining liquid with a paper towel and refill with fresh AromaSimmers liquid potpourri.

CAUTION:

Liquid from AromaSimmers may cause eye irritation. If in eyes, rinse eyes with water for 15 minutes. May be harmful if swallowed. Call physician or poison control center. For medical information ONLY, call 1(800)211-2491 in the United States and Canada. Keep out of reach of children and pets (especially cats). Avoid contact with furniture or skin.

Reed Diffusers

Reed Diffusers



One of the hottest new products on the market is the reed diffuser; a subtle, savvy, elegant way to diffuse fragrance throughout your home.

Features

- Some reed diffusers include fragrance oil developed exclusively for PartyLite, along with a glass bottle, a bundle of 10 natural reeds, two decorative reeds, a wooden collar, and a decorative hanging charm.

Specialty Reed Diffuser Holders

- Fragrance oil sold separately.
- **Wood:** Dust wood with a soft, dry cloth. Do not use harsh materials that could harm the surface.
- **Glass:** Handwash the glass holder in warm soapy water, rinse, and dry thoroughly before adding fragranced oil.

Fragrance Oil



A refill includes a set of reeds and a dispensing cap for easy pouring. Tri-Glow™ Reed Diffuser fragrance oil refills include two sets of natural reeds and a dispensing cap.

To Use

- Place dispensing cap on bottle and carefully pour fragrance into diffuser glass bottle.
- Do not wash bottle with water before adding fragrance oil.
- If fragrance spills, immediately wipe with dry cloth.

Scents of Ambiance by PartyLite™ Diffuser Forms



Our Scents of Ambiance by PartyLite diffusers come in two decorative options. These innovative diffusers deliver wonderful fragrance to your home while adding a lovely accent to your décor. All PartyLite Fragrance Oil refills can be used in any PartyLite diffuser.

Features

- Includes glass base and a sculpted porcelain top with porcelain wick.
- Mix and match your diffuser with our premium fragrance oils, which have been designed exclusively for PartyLite. Sold separately.
- Clean with a damp cloth. Dry immediately with lint-free cloth.

To Use

- Pour fragrance oil into glass base.
- Place porcelain topper on the base.
- Porcelain topper will draw the fragrance oil and constantly diffuse lovely scent throughout your home.

S-Pod™ Travel Unit and Refills



Handy, portable S-Pod is designed to fragrance your personal space on the go: your office, car or gym locker. Also refreshes the bathroom or kitchen.

Features:

- Can be positioned either vertically or horizontally (the clip on the back folds down like a kickstand). When positioned vertically the PartyLite logo is at the bottom.
- Pod fits easily into most car vents.
- Unit is made of plastic. The refills are made of a solid hard fragranced gel.
- Available in: green, teal, purple, pink, orange, black and white
- Each refill lasts a minimum of 45 days.
- Does not require a plug or battery.
- 4 ½" h, 1 ½" w, ½" deep.

Care:

- You can control the fragrance output by sliding the front panel of the pod up or down to expose more or less of the openings that allows the fragrance to come through.
- You can achieve an additional “fragrance boost” through air-flow and heat vents in car or direct sunlight.
- To clean gently wipe with a soft, dry, lint-free cloth.
- Store unused refills in a cool, dark place.
- Never place the refill on any car surface or wood surface.
- Do not open refills until ready to use.

Scent 4U Fan and Refills



This ultra-quiet plastic fan effectively delivers long-lasting, consistent fragrance into any room. The sleek and modern design blends discreetly into your décor. You can adjust the fragrance intensity depending on the number of fragrance discs you insert into the fan (up to four).

Features:

- Available in black and white
- Use a disc alone or combine several to make a fragrance fusion.
- You can set the airflow to low, high or off.
- Your fan turns on and off at intervals, depending on the setting.
- Each refill lasts a minimum of 45 days.
- Refills can be purchased separately.
- Operates on 4 AA batteries (not included).
- 5 ½" h, 3 ½" diam.

Care

- To clean, gently wipe with a soft, dry, lint-free cloth.
- Do not place a refill on any finished wood surface in order to avoid damaging finishes.
- Do not open until you are ready to use.

Scentglow™ Warmer



Add illumination and fragrance without flame. Use the PartyLite Scentglow Warmer in any room – kitchen, bedroom, bathroom – anywhere there is an outlet

Features

- Includes warmer base, warming dish, 25 watt bulb and 60- inch cord with an on/off switch.
- Comes in an array of colors and designs to complement any décor.

Care

- Place up to four Scent Plus® Melts in warmer at once, depending on how strong the fragrance desired.
- To clean, wipe warmer with a soft, dry cloth.
- To remove wax, let the melt(s) cool and solidify completely, then place dish in freezer for about 30 minutes. Press on edges of wax with thumbs. Allow dish to warm to room temperature before reheating.

Natural Rituals

Experience the benefits of 100% natural aromatherapy fragrances made with essential oils. The new Natural Rituals™ Aromatherapy Collection comes in Aromatherapy Soy Candles, Japanese Incense and Scented Oils in four new natural fragrances.

Aromatherapy Soy Candles



Burn Time

- Jar: 40-50 hrs
- Tealight: 4-6 hrs

Our clean-burning, 96% natural soy blend wax candles with lead-free cotton wicks deliver a refreshing pure and uplifting scent. Available in tealights or wax-filled bubble glass jars.

Features

- Candles feature natural fragrances made with essential oils and white soy

wax.

- Sold individually or as a gift-set.
- Made with 96% natural soy wax, 4% food-grade paraffin with a cotton wick.
- Presented in simple yet artful packaging.
- Jar dimensions – height: 4 ¼ inches, diameter: 3 inches

Care

- To reduce sooting, you must trim the wicks to ¼” each time before candle is re-lit.
- Keep wicks centered of jar and away from sides of glass.
- Always burn the candle long enough for the wax to liquefy to the edge of the glass.

Aromatherapy Japanese Incense

Made especially for PartyLite® by Nippon Kodo, the maker of premium incense for over 400 years. Each stick releases full-bodied fragrance that has the power to affect your mind, body and soul.

Features

- Each set includes 40 incense sticks containing essential oils and a ¾ square porcelain incense holder and decorative box.
- Each stick lasts approximately 25 minutes.

Care

- Keep out of drafts.
- Burn in appropriate, heat-resistant holders.

What is Aromatherapy?

Most people know aromatherapy as a form of alternative medicine that uses plant materials, known as essential oils, and other aromatic compounds for the purpose of altering a person’s mood, cognitive function or health.

The effectiveness of aromatherapy is yet to be scientifically proven, however some evidence exists that essential oils may have therapeutic potential.

The preceding statements are for informational purposes only. PartyLite is not making any medical or health claims.

Nippon Kodo

Nippon Kodo’s devotion to making fine incense follows an honored tradition that can be traced back more than 400 years ago to a skilled artisan known as Koju who proved precious aromas to the Emperor of Japan and his Court.

Aromatherapy Scented Oil

Pure, captivating scented oil provides a subtle, continual flow of restorative fragrance for your home.

Features

- Four natural, aromatherapy fragrances to use with PartyLite® fragrance warmers or to refresh garlands.
- Each glass bottle is .33 fl oz with a twist on cap and plastic top dropper.
- Scented oil may appear to cause a shadow on the porcelain. The shadow will disappear as the oil dries.

Care

- Scented oil may damage wood surfaces, countertops and other finished surfaces. If spilled, clean up immediately.
- Scented oil may stain fabrics. If spilled, clean up immediately according to the fabric's cleaning instructions.
- Keep away from children and pets.

Personal Care

Pamper and indulge yourself with variety of personal care products from PartyLite.

Simply Lavender by PartyLite™

Take a lavender journey with luxurious natural lavender products by PartyLite. Our neck roll, eye pillow and sachet roll are created with the finest lavender cultivated in France. Made of soft, cuddly, washable fabrics.

Essence of Lavender™ Fragrance

Fresh blends of the classic notes of lavender with a lively bouquet of florals and pleasing citrus greens. Fragrance contains natural essential oils.

Essence of Lavender Guest Soaps



Our guest soaps are made with essential oils from real lavender and jojoba oil that will leave your skin feeling soft, clean and completely relaxed. Set of 10 individual soaps wrapped in tissue paper and placed in a decorative box. Perfect for gift giving.

Essence of Lavender Linen & Room Spray



- Aromatic lavender has been used to refresh linens for hundreds of years but it hasn't always been as convenient as this.
- Spritz your sheets and towels with the soothing scent of lavender.
- Spray into the air or onto your skin to enjoy Essence of Lavender fragrance made with essential oils.
- Then tuck the bottle away in the pretty Simply Lavender™ design box.
- 4 fluid ounces. (118 milliliters)
- For fine or delicate fabrics, test a small area first.
- Avoid contact with eyes

[Table of Contents](#)
[Accessories](#)
[Candles](#)
[Flameless Fragrance](#)
[Personal Care](#)

Well Being by PartyLite™

Hand Therapy



Unlock the secret to beautiful hands with our therapeutic hand cream. Naturally fragranced with essential oils and rich in antioxidants, our Spa Hand Therapy includes shea butter and Vitamins A, C and E to soothe and pamper dry hands, nails and cuticles. 3.4 oz. Dermatologist tested.

Instant Manicure



Naturally fragranced and rich in essential oils. Contains sugar that acts as an exfoliate to smooth and soften your hands.

To use:

Apply to wet hands. Rub a small amount of our Instant Manicure in a circular motion over the top and palm of your hands for approximately one minute. Pay special attention to dry areas, nails and cuticles. Rinse and pat dry, allowing the oils to nourish your skin. Use two to three times per week. Dermatologist tested.